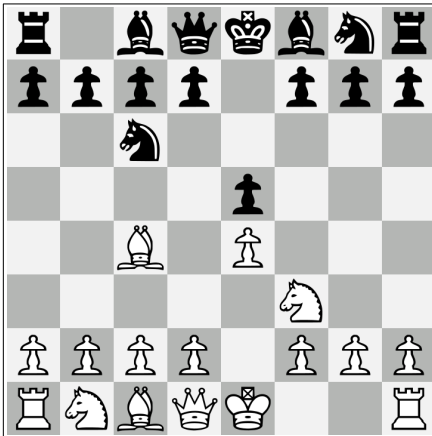
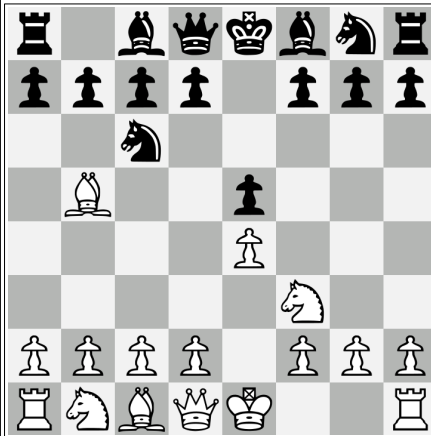


SOME COMMON CHESS OPENINGS PART 1: KING PAWN



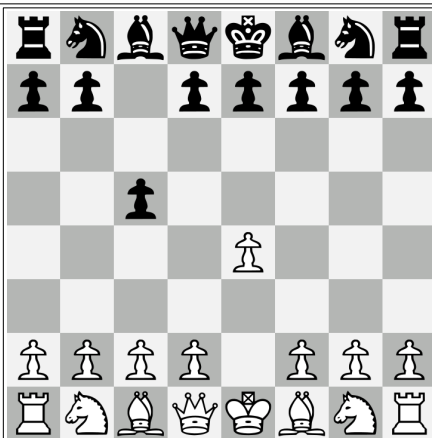
1.e4 e5 2.Nf3 Nc6 3.Bc4
 The **Giuoco Piano** is perhaps the oldest of openings. White hopes for a quick win by attacking Black's pawn at f7.



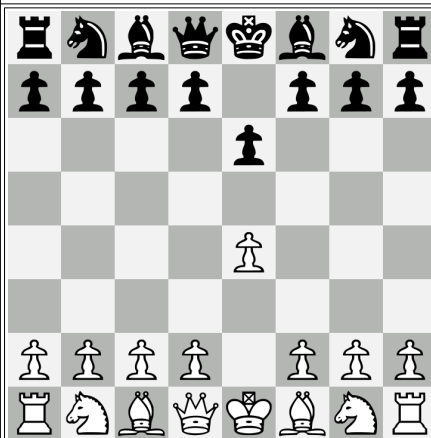
1.e4 e5 2.Nf3 Nc6 3.Bb5
 The **Ruy Lopez** is known as the "Cadillac" of chess openings. White attacks Black's pawn at e5 by threatening to exchange the knight on c6. After 3...a6, White can retreat (4.Ba4) or capture the knight.



1. e4 e5 2. Nf3 Nc6 3. Nc3 Nf6
 The **Four Knights Game** offers a solid symmetrical game, but there are some tactics to be aware of. Watch out for the trap 4.Bc4 Nxe4! 5.Nxe4 d5! equalizing easily.



1.e4 c5
 The **Sicilian Defense** is Black's most dynamic, aggressive response to 1.e4. While the Sicilian offers tactics and counterplay galore, it can be complicated for beginning players. The only way to learn it is to play it!



1.e4 e6
 The **French Defense** is so named because a game between England and France starting with this position was won by Black. In the hands of an experienced player, the French can be a dangerous weapon.



1. e4 Nf6
 In **Alekhine's Defense**, Black tries to get White to create a big pawn center which Black then attacks. If you're playing White, restraint is advised.